

Distributed by:



BOWENS

imaging **POWER**

BC-112 Imaging Power Issue 1 04/04

BOWENS

355 Old Road • Clacton on Sea • Essex • CO15 3RH • United Kingdom
www.bowens.co.uk



Writing with Light

Photography has come a long way in 150 years, but no matter what advances are made in camera technology there can be no substitute for perfect light.

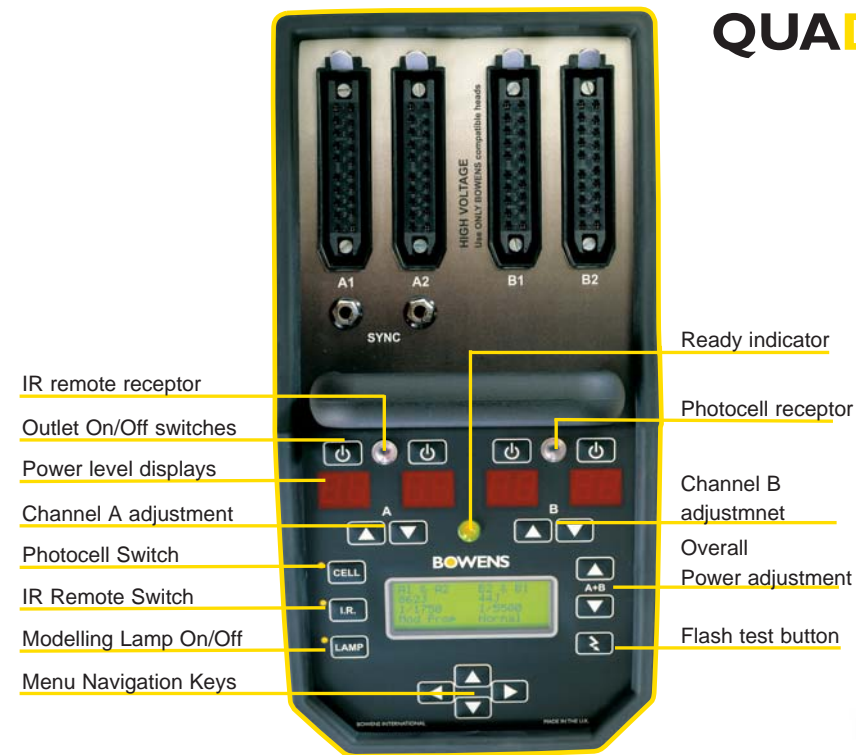
For photographers, the digital age is all about speed, performance and consistency. The latest power packs from Bowen's push the limits of technology to the very edge to ensure that today's digital photographer can depend on them again and again for the perfect shot every time.





QUADX
imaging power

QUADX finger-tip precision



IR remote receptor

Outlet On/Off switches

Power level displays

Channel A adjustment

Photocell Switch

IR Remote Switch

Modelling Lamp On/Off

Menu Navigation Keys

Ready indicator

Photocell receptor

Channel B adjustment

Overall Power adjustment

Flash test button



“PRECISION, POWER & CONSISTENT COLOUR OUTPUT”

With flash durations as fast as 1/7000 of a second, QUADX from Bowens sets new standards for studio lighting in today's digital world.

The Heart of the QUADX System.

The QUADX is a powerful, four-channel pack with precise power adjustments and dependable repeatability. With a maximum power of 3000w/s and a minimum of just 31w/s with one head - a power range of 7.6 f/stops! The QUADX offers a wide range of lighting control options with precision adjustments and a user-friendly control panel that lets you know exactly how much power is coming out of each head, the flash duration and a host of other vital statistics, all at the press of a button.

Precision Power Controls and Repeatable Performance.

Digital capturing devices require a much greater degree of exposure accuracy than film materials. The QUADX lets you control the flash output of each head in 1/10-stop increments and offers repeatable output flash after flash, which is ideal for multi-shot camera backs.

Consistent Colour and Short Flash Durations.

The unique power-management system of the QUADX constantly monitors and adjusts capacitor performance to ensure complete output accuracy and consistency, retaining a colour temperature of 5800 K, ±2%. The units capacitor switching delivers greater colour consistency over the entire power range in addition to providing flash durations as short as 1/1430 sec. with a single head at full power (1/7100 sec. with two heads at 250w/s).

Most Efficient Charging System.

The QUADX features an advanced charging system that is extremely efficient and extends the life of the pack's capacitors. The automatic mode provides a slow initial charge when the unit is switched on and then, by monitoring the temperature of the capacitors, offers the fastest possible recharging times.

The QUADX Control Panel

The control panel of the QUADX is simple and intuitive to use. Power is divided into two independent channels, A and B, one having a maximum power of 2000w/s (A), the other (B) 1000w/s. Each channel controls two flash-head outlets in 1/10-stop increments. When more than one head is used in the same channel, the power of that channel will be divided equally between those two heads. When a head is connected to Channel B, the pack automatically becomes asymmetric. Once lighting ratio or contrast levels are set, power level adjustments can be made to achieve perfect exposures.

Advanced QUADX Features

With its sophisticated circuitry, the QUADX gives the photographer access to many advanced features including trigger delay, flash counter, joules/percentage display, multi-flash mode, memory function and more. Other features offered by the QUADX include:

Auto Bracketing

Bracketing flash exposures is easy with the QUADX. You can set up to three bracketing intervals from 1/10 to 9/10-stop and monitor the bracketing sequence and see what each power level will be on the LCD display.

Infrared Remote

The QUADX features an IR remote control system that allows the photographer full control of the pack from up to 10m (30').

Head Failure Indication

The QUADX will indicate that a head has failed to fire and the pack will not fire again until that head is switched off.

Special Effect Modes

Choose from trigger delay, trigger skip and multi-trigger setup to fire up to nine packs at different intervals or sequentially.

Overload Protection

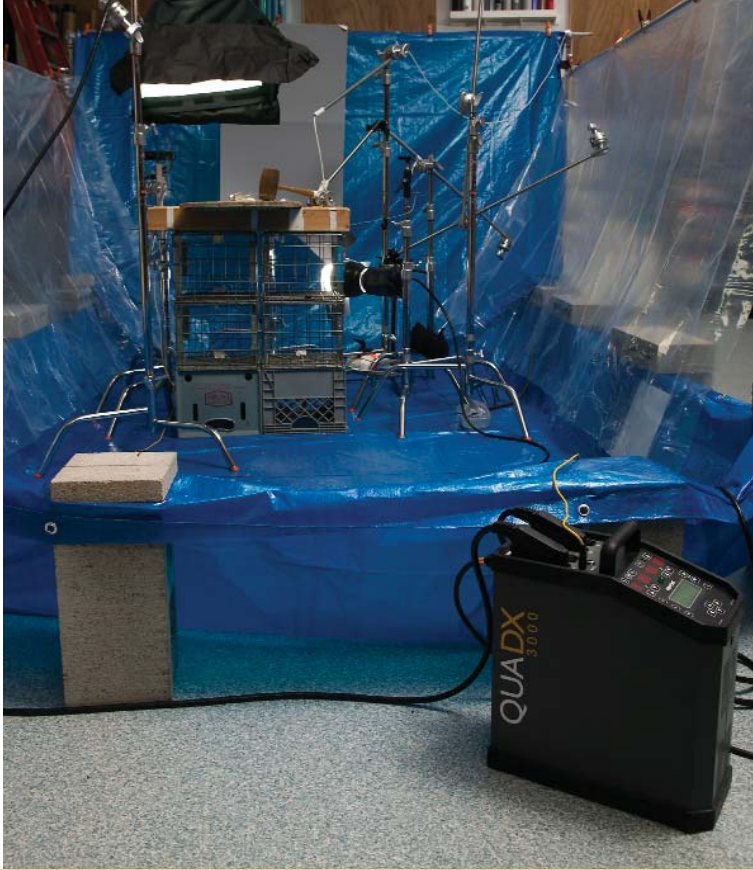
The QUADX has two cut-out switches that can be quickly reset should any overload be experienced.

Lights. Action. Smash!

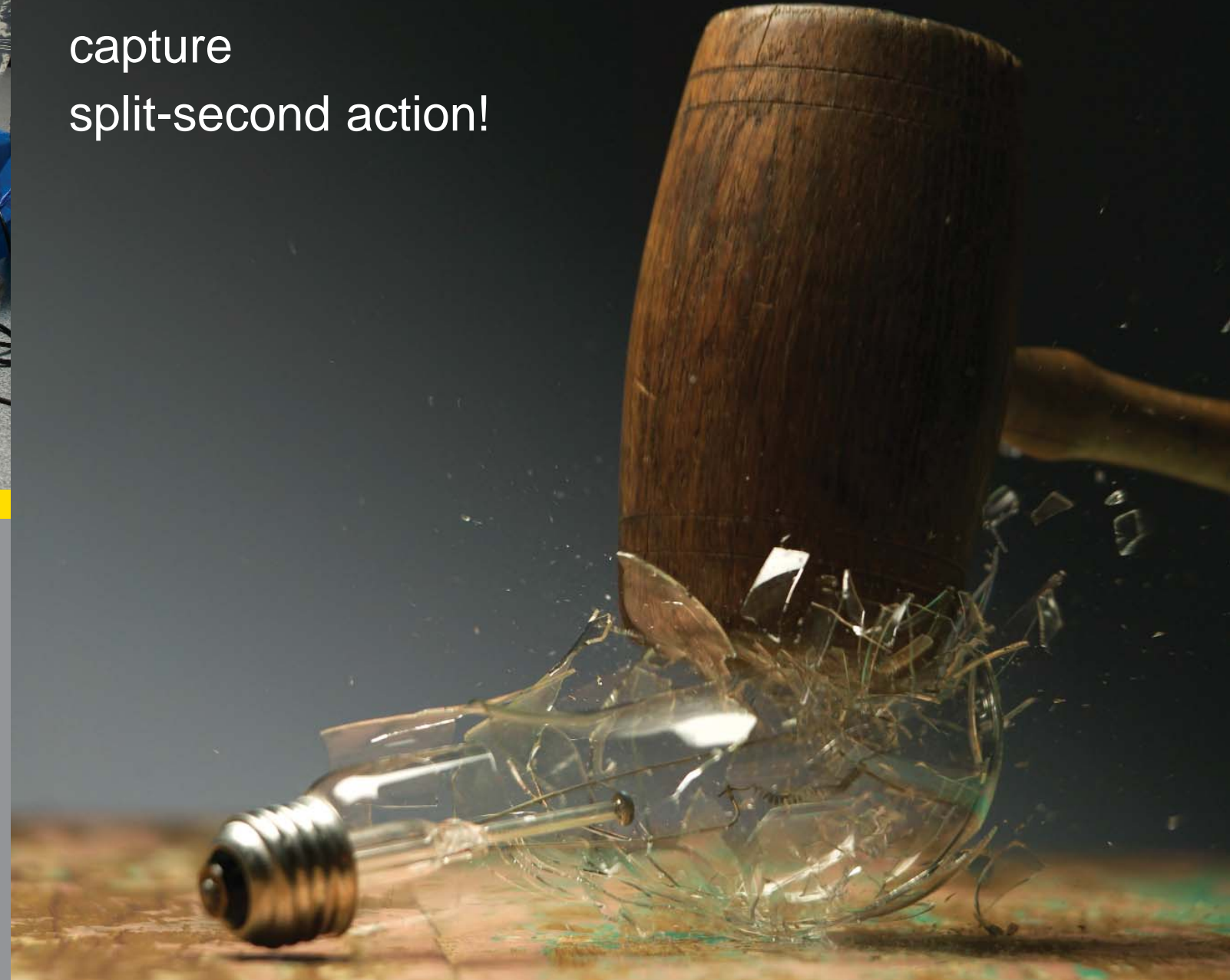
The QUADX is capable of fast flash durations over 1/7000 of a second*, making it perfect for fashion and stop-action special effects photography. At full-power of 3000w/s the flash duration is 1/1430 of a second, almost twice as fast as its nearest competitor. As the power level is reduced, the QUADX gets quicker, making it faster than any other generator or compact flash unit on the market.

In this shot of a mallet smashing a light bulb, to achieve the fastest flash duration two flash heads were used to illuminate the subject, one from above and one from below.

* With power set at 1/500 of a second and two QUADX flash heads.



Lightning fast
flash-durations
capture
split-second action!



Product Shot on Page 6

Lighting:	One QUADX 3000 pack Two QUADX heads
Camera:	Canon EOS 1Ds Digital SLR
Photographer:	Art Wise



Portrait on Page 1

Lighting:	Two QUADX 3000 packs Three QUADX heads
Camera:	Canon EOS 1Ds Digital SLR
Photographer:	Art Wise
Model:	Kimberly Meloney
Stylist:	Alfred Lester
Agency:	Ford Modeling Agency



QUADX 3000 Studio Kit

This basic QUADX Flash Kit not only gives you a complete lighting system, it will save you money! This kit includes a QUADX Power Pack, two QUADX Flash Heads, power cord and sync cord. Infrared sold separately.
BW7700



QUAD 2400 Studio Kit

The QUAD 2400 is also available as a money saving studio kit. This kit includes a QUAD 2400 generator, two QUADX Flash Heads, power cord and sync cord.
BW7720



QUADX 3000 Generator

- Four flash head outlets with power divided into two independent channels
- Power output from 3000w/s down to 31w/s with one head (down to 16w/s with two heads!)
- Colour consistency varies no more than ± 200 K when operating between 250 and 3000w/s
- An advanced charging system operates most efficiently and extends capacitor life
- Flash durations faster than 1/7000 sec. are made possible with the use of triple electrode flash tubes in the QUADX head
- Auto-bracketing is easy to set up with three-intervals from $\frac{1}{10}$ to $\frac{1}{10}$ -stop
- An optional IR Remote Control System allows photographer to control all functions up to 30 feet away
- Variable-speed cooling fans respond to internal temperature changes to ensure peak performance

BW7600

Specifications

Stored energy:	3000w/s
Flash head outlets:	4 (in two independent channels)
Power range:	31 - 3000w/s with one head (6.6-stops) 16 - 3000w/s with two heads (7.6-stops)
Recycle time:	0.4 - 2.0 sec.
Flash duration:	1/7100 - 1/1430 sec.
Power adjustment:	$\frac{1}{10}$ -stop
Colour temperature:	5800 K ($\pm 2\%$ from 3000 to 200w/s)
Sync voltage:	6V
Stabilisation:	± 0.1 f/stop
Dimensions:	7 (w) x 14 $\frac{1}{4}$ (l) x 14 $\frac{1}{2}$ (h)
Weight:	25.5 lbs.

QUAD 2400 Generator

- Two flash head outlets with power divided into two independent channels
- Variable power range over a six stop range
- Power output from 2400w/s down to 37w/s
- Flash-voltage stabilisation $\pm 1\%$ at maximum power
- Choice of four modelling settings in two modes: continuous and intermittent
- Low voltage synchronization (6V) is safe for digital cameras
- Overload protection from 15A thermal breakers for charge and modelling
- Switchable photo cell
- Switchable audio ready signal

BW7620

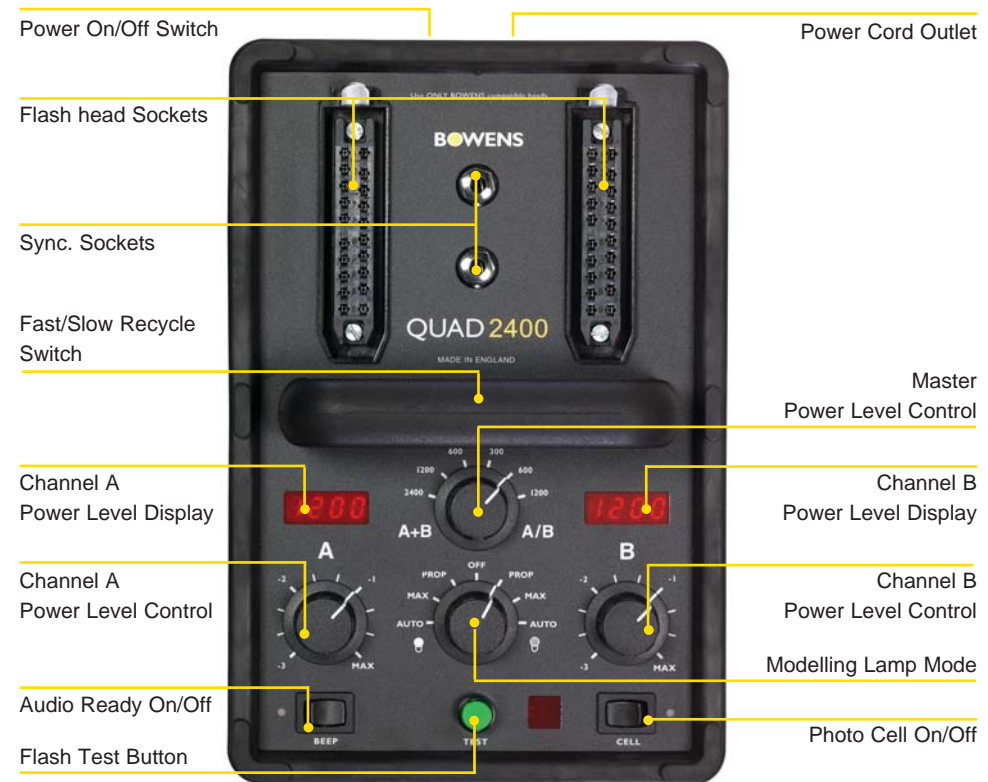
Specifications

Stored energy:	2400w/s
Flash head outlets:	2 (in two independent channels)
Power range:	37 - 2400w/s (6-stops)
Recycle time:	3 sec (fast) / 5 sec. (slow)
Flash duration:	1/600 (600w/s) / 1/400 sec. (2400w/s)
Power adjustment:	$\frac{1}{3}$ stop
Colour temperature:	5600 K (with UV flash tube)
Sync voltage:	6V
Stabilisation:	$\pm 0.1\%$
Dimensions:	18 x 28 x 34cm (7 x 11 x 13 $\frac{1}{2}$ ")
Weight:	9.5 kg (21 lbs)



QUAD 2400

Flash performance you can depend on.



“THE PACK BUILT WITH DIGITAL USERS IN MIND”

Using capacitor switching, the QUAD 2400 ensures total colour consistency. The power can be adjusted in 1/3 f-stops, perfect for digital work.

QUAD Power Versatility.

With two channels, choose from taking the full 2400Ws from a single socket, or dividing the power across two channels giving a wide selection of powers. Once the pack is switched to its asymmetrical mode, two channels, each with a maximum power of 1200w/s are available. As each can be adjusted independently of the other a great deal of lighting flexibility can be achieved.

QUAD Precision Power.

Flash power can be adjusted in accurate steps of 1/3rd f-stop, offering excellent control of exposure. Large LED displays show clearly the Ws output per channel. Each channel can be adjusted over three f-stops. With a minimum power output of just 37w/s the QUAD 2400 has a range of 6 f-stops.

Colour Consistency Mastered.

The overall power of the pack can be reduced using a system of capacitor switching. By reducing the number of capacitors being used a greater level of colour consistency can be achieved. In practice this means that the QUAD 2400 can be switched from 2400w/s, to 1200w/s to 600w/s with less than 70K shift in colour temperature.

Modelling Lamp Control.

In addition to selecting full power modelling or lamps in proportion, a new Auto setting will set the modelling lamp of the brightest head to maximum, even when the overall flash power of the pack is set at a low level. This helps the photographer preview their lighting, even at the lowest of flash powers.

The QUAD 2400 Control Panel

The control panel of the QUAD 2400 is designed for quick and easy use. There are two flash-head outlets, each operating on its own independent channel with a maximum power of 1200w/s each. A master control provides two-stops of power control in one-stop increments, while independent channel variators offer three-stops of power control in 1/3-stop increments to each channel. Power levels for each channel are provided in easy-to-read LED numeric displays. A full-power indicator light lets you know when the pack is 100% charged.

Other QUAD 2400 Features

The QUAD 2400 offers a host of features that are designed to make the photographers job easier:

Two sync. sockets

Two conveniently located sync. sockets allow you to simultaneously connect your pack to your camera and your light meter without time consuming disconnections and reconections. These sync sockets can also be used for IR or radio triggers such as the Bowens Pulsar; for wireless triggering.

Audio Ready Signal

This switchable signal lets you know when your pack is 100% charged even when it is out of visual range.

Unique Modelling Modes

Intermittent modelling mode extinguishes all modelling lamps when the pack is fired and turns them back on again when the pack is 100% recycled. This provides a visual indication that the pack, and each head, has been successfully triggered and recycled.

Flash Voltage Stabilisation

To ensure consistently dependable output the QUAD 2400 offers ±1% flash-voltage stabilisation at maximum power.

Built-in Photo Cell

In order to activate your QUAD 2400 pack from other flash units, a convenient photo cell is built directly into the pack.



QUADX Flash Head

The fan-cooled QUADX flash head is capable of handling up to 3000w/s and can take up to 650W modelling lamps for maximum brightness. The user changeable flash tube features a three-electrode design to deliver the fastest possible flash duration. A UV-balanced Pyrex dome ensures colour integrity and security. When combined with the full line of Bowens S-type reflectors and accessories this system will give you unmatched lighting versatility and unlimited creative capabilities.

To prolong the life of the flash head QUAD generators incorporate soft-start circuitry which dims the lamps up and down rather than abruptly powering them on and off.

BW7650

Ringflash

This classic lighting accessory gives a unique full-frontal lighting effect that makes it popular among fashion photographers.

The camera mounts to the center of an opening that is surrounded by two semicircular 1500w/s flash tubes to achieve amazing results. To ensure short, freeze-action flash duration, the flash tubes have three, rather than two, electrodes and each has a separate cable. The Ringflash can be used with any QUAD generator and its integral mounting bracket adjusts for use with virtually every medium format and 35mm camera.

BW7660

For refined lighting effects, two quite different reflectors are available.

Ringflash High-Intensity Reflector

This reflector increases the overall size of the light source, intensifying the light output.

BW2310

Ringflash Diffuser

For a softer lighting effect, this opal diffuser can be used with the Ringflash. This will soften the shadows and is perfect for most direct lighting applications.

BW2311

RC-2 Infrared Remote Control

The RC-2 Infrared Remote Control is the ultimate way to operate the QUADX pack quickly and precisely in a busy studio environment.

This full-function remote with eight IR channels lets you control multiple QUADX packs from one spot from up to 10 meters. The remote handset allows you to control power levels, modelling lamp settings, bracketing sequence selection, test flash, slave and other functions. Operates on a single 9-volt battery.

BW7800

Pulsar Radio Trigger System

Whether you are triggering flash heads for complicated lighting setups or cameras for remote control nature shots or special effects, this system is for you.

Each Pulsar unit can be either a transmitter or receiver and is capable of sending or receiving signals beyond 100m (333'). Unlike IR triggering systems, the radio-transmitted Pulsar operates around corners and through walls.

The Pulsar has four separate channels, enabling the photographer to isolate up to four light sources or to combine them and fire all of them at once without leaving the camera. Additionally, the Pulsar has a studio selector switch, which provides isolation from other Pulsar units using the same channel, and

allowing up to six different systems to operate independently in the same studio.

Other Pulsar features include:

- Long battery life up to 200 hours of continuous use from two AAA batteries.
- Low voltage operation of just 3V making it ideal for use with sensitive digital cameras.
- Compact and lightweight design allows the units to be mounted directly onto your camera's hot shoe or to your generator, or monolights.

Each Pulsar unit measures 90(l) x 49(w) x 44(h) mm and weighs only 122g.

Pulsar Twin Pack (BW5160)

Pulsar Single Unit (BW5150)



1 120° Wide Angle Umbrella Reflector

Designed to be used with and to support umbrellas, this 15cm (6") reflector has a very wide, even coverage, making it perfect to spread light over broad areas. Its very small diameter creates hard shadows and high-contrast lighting. BW1885

2 50° Keylite Reflector

This is a very high output 24cm (9½") reflector that creates a highly specular result. It's the perfect reflector to be used where maximum light output is required. It's also a superb reflector for bouncing light off ceilings or simply to give the maximum possible depth of field. BW1886

3 75° Softlite Reflector

This 15" matt-finished reflector is supplied with a double diffuser cap that covers the flash tube and modelling lamp for added softness. The softest of Bowens' direct reflectors, it is perfect for portraiture, beauty and small product photography. The diffuser cap can be removed, making it an excellent large-diameter direct reflector. BW1899

4 Grid Diffuser

This is an accessory to the 75° Softlite Reflector that creates a unique lighting effect by including a Perspex outer diffuser with a honeycomb grid in the centre. The Grid Diffuser gives a pool of direct light in the centre, surrounded by soft-diffused light. The ratio between the centre and edge is 3:1 - ideal for portrait applications. BW1866

5 Reflector Kit

An innovative lighting control outfit composed of a reflector, snoot and four-leaf barn door, the Bowens Reflector Kit represents exceptional value for studio and location photographers. The efficient reflector is optimised for light spread and has a 60° coverage. The interchangeable snoot and barn door attachments bayonet quickly onto the main reflector, providing instant light control. BW1882

6 High-Performance Reflector

This 32cm reflector achieves the maximum amount of light output possible for lighting large groups and bouncing light off of high ceilings. The efficient parabolic design delivers a narrow, bright beam of light with intense shadows and high contrast. A must where sheer power is required. BW1878

7 Supersoft 600 Diffuser for Sunlite 40

Here is the ultimate soft beauty light. The Supersoft 600 mounts directly into the front of the Sunlite 40. Its super-large 600mm (23½") front diameter reflector and unique three-layered diffusion design creates a large, soft light source that is completely even and delivers perfectly round catch lights for fashion and beauty applications. The internal baffle is printed with a computer-designed light distribution pattern to reduce the centre brightness of the reflector. A double-layer front diffuser completes the softening effect. BW1884

Supersoft 600 Kit

This complete kit includes the Sunlite 40, Supersoft 600 reflector, front diffuser screen and inner baffle. BW1868/84

8 40° Sunlite Reflector

A 43cm (17") white-painted reflector designed to replicate sunlight for photographing such things as architectural models. The white-painted interior of the Sunlite reflector helps ensure that the light delivered is even. BW1868

9 Backlite Reflector

With its 20 x 30.5cm (8 x 12") elliptical shape, this reflector produces an oval pool of light that can be used to create a natural vignette on a background or other areas. Two fitted spring clips allow colour gels to be fitted. BW2560

A set of colour gels including seven popular colours, a neutral-density filter and two diffusers for heightened lighting creativity is also available for the Backlite Reflector. BW2552

10 Grid Reflector

With a rolled rim and indent, this medium-angle reflector will hold an 18cm (7") honeycomb. BW1863

11 Set of Three Honeycombs

This set is designed to be used with the Grid Reflector. The three sizes offer ⅛" (3.175mm), ⅜" (9.525mm) and ¼" (6.35mm) hole sizes, each with increasingly wide-angle spots of light. BW864



12 65° Maxilite Reflector

This is a good general-purpose direct reflector with an even coverage and a high light output. Since it has a small 20cm (8") diameter, the light it produces is moderately high in contrast. The stippled surface ensures a smooth and even light distribution. BW1887

13 Maxilite Honeycombs

These fit on to the front of the Maxilite Reflector and deliver a very tightly controlled pool of illumination, creating a highly efficient spot effect

BW1891 - A 3/8" (9.525mm) hole creates a wider angle spot effect.

BW1892 - A 1/4" (6.35mm) hole creates a narrower angle spot effect.

14 Gel Filter Holder for Maxilite

Allows light to be gelled or coloured. BW2368
Maxilite Gel Set. BW2364

15 Four-Way Barn Door & Gel Holder

Also designed for use with the Maxilite to give greater control of light output. BW2363

16 Universal Honeycombs

These are designed to fit a wide range of Bowens reflectors. The adjustable fittings clip over the rim of the reflector.

BW1861A - A 3/8" (9.525mm) hole creates a wider angle spot effect.

BW1861B - A 1/4" (6.35mm) hole creates a narrower angle spot effect.

17 Universal Clip-On Barn Doors

These are a must for anyone using direct reflectors to enable the spread of light to be precisely controlled. BW1869

18 15° Snoot

For creating a simple spot effect, this 10cm (4") cone can also be used as a hair light light, putting a pool of illumination on the hair without spilling on to the face or background. BW1888

19 Honeycomb for snoot

When even tighter light is required this clips simply to the front of the snoot. BW1862

20 Multiclip

Invaluable to all photographers, the multiclip has thousands of uses around the studio. BW1826

Bowens Jetstream Wind Machine

The variable-speed Jetstream Wind Machine makes special effects a breeze and adds a sense of motion to your shots. It's great for glamour shots or for controlling the smoke or fog on a set. For maximum gusts, turn the control to full power and you'll create 2400 RPM of controllable wind! Its remote operating cable enables you to control speed levels from up to 6m (20') away, so you can go from a light draft to a gentle breeze to an intense bluster without leaving your camera.

The Jetstream measures 30.5(l) x 25(d)cm (12 x 10"), weighs only 6.3kg (13.5lbs) and features a 5/8" mount to fit most light stands.

Jetstream (240V) - BW2550

Jetstream (117V) - BW2550B

Fresnel 200 Spot Attachment

This 200mm Fresnel lens produces that classic Hollywood-style of lighting unique to Fresnel spots. A built-in iris gives very tight control of the light pool, making it ideal for product photography. This versatile light is also good for classic portraits and for precise control in commercial work. BW2914

Univeral Spot Attachment

This unique light-head attachment features a high-quality optical system that allows the projection of gobos, patterns and cut-outs on the background or onto the subject. It can also be used as a focusing spot to light very specific parts of the subject. The gobo holder (included) accepts standard M-size gobos. BW1880

A Set of 12 M-size gobos is available. BW1879.

Pro-Spot

This is the perfect accessory to create a host of unique lighting effects. The 1500w/s Pro-Spot incorporates a bright 50W reflector modelling lamp. This optical spotlight has been engineered to produce clean sharp images using a highly efficient 85mm f/2.8 projector lens. The unit incorporates a powerful cooling fan to maximize operating times.

Designed to accept 2.6" and 3.4" gobos and patterns, the Pro-Spot appeals to many different types of photographers. For the portrait photographer, it can be used to project patterns and effects enhancing any portrait. For the commercial photographer, the ability to place light with pinpoint accuracy is invaluable.

The Pro-Spot is supplied with a set of round apertures to give precise circular spots of light.

BW7670

WAFER

The Wafer is probably the most innovative light bank on the market, producing a beautiful quality of light and offering a degree of control unmatched by similar products. Its range of shapes and sizes is almost as big as its range of accessories, making the Wafer suitable for a variety of work in all disciplines.

Wafer light banks produce a crisp, smooth quality of light while their narrow profile and silver/white interiors with two interchangeable graduated inner baffles deliver unparalleled flexibility and control.

The Wafer design is supplied with two internal Mylar baffles or screens, each printed with a special pattern to ensure the light distribution on the front cloth is absolutely even over its entire surface. These baffles also assist in controlling the colour temperature: one is white and the other is blue for more neutral tones.

The front cloth of the Wafer is recessed to help control light spill. The resulting internal edge has a hook-and-loop lining, allowing an accessory honeycomb to be fitted to the front for additional directional control.

The Wafer is supplied in a stowage pouch for convenient portability and includes the flash adaptor speed ring. Brand specific flash adaptor rings are available for every leading studio lighting system.

Wafers are available as rectangles, which are by far the most popular and versatile. Hexagonal Wafers are especially good for portraiture whilst the strips, which produce much sharper cut-off, are popular with fashion photographers.



The Wafer Light Bank System

Wafer Accessories

Oval Diffuser

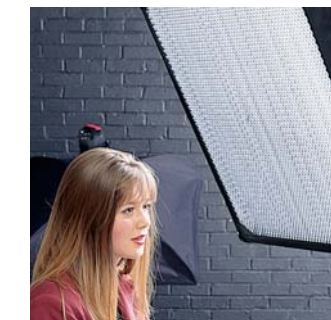
A translucent fabric diffuser with black oval mask that converts rectangular light banks into ovals. Perfect for those shots where a rounded highlight or catch light is desirable.

For Wafer 75	BW1196
For Wafer 100	BW1977
For Wafer 140	BW1197

Hex Oval Diffuser

These shaped diffusers for the Hex Oval soft boxes create a rounded catch light.

For Wafer Hex 100	BW1194
For Wafer Hex 140	BW1185
For Wafer Hex 180	BW1186



Wafer Honeycombs

A lightweight, aluminium honeycomb on a frame is fitted into the recess at the front of the Wafer soft box. Ideal for product photography, giving a soft, controllable pool of illumination.

For Wafer 75	BW1160
For Wafer 100	BW1161

Strip Wafers

Wafer Strip 100
100 x 38 x 25cm (75 x 15 x 11")

Ideal where more contrast and a sharper edge to the shadows is required. BW1180

Wafer Strip 140
140 x 35 x 50cm (55 x 13 3/4 x 19 1/2")

For longer coverage than the 100 Strip. BW1181

Wafer Strip 200
200 x 70 x 62cm (195 x 27 1/2 x 24 1/2")

Full-length fashion with hard-edged lateral contrast. Good overhead light source to separate subjects from background. BW1184.

All Strip Wafers are supplied with one full-width and one half-width front diffuser. The half-width diffuser provides an even sharper cut-off and harder edge to the shadows.

Hexagonal Wafers

Wafer Hex 100
100 x 70 x 30cm (39 x 27 x 12")

Ideal for single head-and-shoulder portraits or for greater contrast on 3/4-length shots and fashion. BW1195

Wafer Hex 140
140 x 95 x 37cm (55 x 37 1/2 x 14 1/2")

For single portraits or small groups where a natural vignette is required. BW1182

Wafer Hex 180
180 x 135 x 52cm (71 x 53 x 20 1/2")

A broad beautiful light for almost any subject. great for larger groups. BW1183

Rectangular Wafers

Wafer 56
56 x 25 x 28cm (22 x 10 x 11")

Here is a compact soft box for small still life, either as a main or rim light. It also provides an exceptionally good hair light. BW1894

Wafer 75
75 x 50 x 28cm (30 x 19 3/4 x 11")

This medium-sized soft box is great for still life, single portraits or for more contrast lighting in larger sets. BW1895

Wafer 100
100 x 75 x 35cm (40 x 30 x 14")

Our most popular size, this soft box is suitable for full-length portraits, small groups and product illustration. Still compact enough for location. BW1896

Wafer 140
140 x 100 x 50cm (53 x 40 x 19 3/4")

For full-length portraits and fashion, also good for larger sets. This unit is extremely soft because of its size. BW1897

Wafer 200
200 x 140 x 65cm (76 x 53 x 25 1/2")

An enormous soft light that is still lightweight enough to hang on Hi-Glide tracking or boom arms, the Wafer 200 is beautiful for full-length work, group portraits and large products. BW1898

Flash and Light Head Adapter Rings

Wafer soft boxes can be used with most major studio lighting systems. Simply attach the appropriate adaptor to the mounting rings supplied.

- BW1954 - Bowens/Calumet/Redwing
- BW1953 - Bowens L Type
- BW1955 - Balcar
- BW1956 - Multiblitz Large
- BW1961 - Multiblitz Small
- BW1957 - Elinchrom
- BW1958 - Broncolor Impact
- BW1959 - Broncolor Pulso
- BW1960 - Broncolor TA
- BW1962 - Courtney
- BW1997 - Hensel

Light-Softening Tools



BOWENS
Softbox



Octo 150

Octo 150 is a unique large soft box which offers several non-traditional soft box features that will be of particular interest to portrait photographers.

Unlike other large octagonal soft boxes on the market, the Octo 150 features a perfectly round front diffuser for perfectly round catch lights which are cleaner and more pleasing. Another difference is that the light is mounted in the unit facing the rear cloth, away from the subject. This offers two distinct advantages over traditional soft boxes. The first advantage is that the Octo 150 does not have extra layers of diffusion fabric between the light source and the front diffusion fabric making it an extremely efficient soft box that can be used even with small flash units such as an Esprit 500.

The other significant advantage of this design is the interior silvered and white surfaces which have been designed to ensure optimum evenness of illumination on the cloth and because of this can be used close to the subject to produce maximum softness as well as maximum light output. BW1650

115cm Silver Umbrella

The silver umbrella provides maximum reflectance and a circular pattern of directional light. Its versatile and efficient performance has made it a staple for studios across the world. RD4146

Silver/White Umbrella

These dual-purpose umbrellas feature a white interior surface backed by a removable silver fabric with a black exterior. This provides a soft but highly efficient bounced light source. For close-up lighting, the silver/black backing can be removed, allowing you to get closer to the subject while lighting through the umbrella.

RD4036 - 90cm Silver/White Umbrella

RD4046 - 115cm Silver/White Umbrella

RD4060 - 140cm Silver/White Umbrella

Bowens Soft Boxes

The Bowens range of soft boxes has been developed to offer photographers the very highest-quality light source at a very modest cost. Their silver interior and shallow construction offers a high degree of efficiency while a translucent diffuser ensures even light distribution.

If absolute evenness is critical for the larger sizes, internal diffusers are available as an accessory, as are carry bags for storage and location work.

Each soft box comes supplied with a casting and Bowens' S adapter. Each will accept all Wafer adapters and can be used with most popular flash systems.

Soft Box Strip

100 x 40cm (39½ x 15¾")

The narrow profile of the strip gives a much sharper cut off, making it ideal for fashion and beauty. BW1710

Soft Box 60

60 x 60cm (23½ x 23½")

Ideal for the small portrait or still life photographer. BW1715

Soft Box 100

100 x 100cm (39½ x 39½")

Our most popular size, suitable for a wide range of photography. BW1720

Soft Box 140

140 x 140cm (55 x 55")

The ideal size for full-length fashion work as well as room sets and general photography where a very soft light is required. BW1725

Soft Box Accessories

Internal Diffuser

Clips into the centre of the soft box to give absolutely even illumination across the front diffuser.

For Soft Box 100 - BW1780

For Soft Box 140 - BW1781

Carry Bags

Keep your Soft Box protected when on location work.

For Soft Box 60 & Strip - BW1765

For Soft Box 100 & 140 - BW1770



© 2004 Photo by Art Wise Photography

QUAD
imaging power